

**Objective tree**



**Project selection**



**Draft PDM**

Narrative Summary	Objectively Verifiable Indicators	Means of Verification	Important Assumptions
<p><u>Overall Goal</u> Males and Females, Elders, Youth, and Children who disability will have equal rights.</p>			
<p><u>Project Purpose</u> Within the National CBR programme, people who have disability will be mainstreamed into divisional development in Galnewa sub-district.</p>	<p>The number of people who have disability accessing mainstream activities increased by 50 percent.</p>		
<p><u>Outputs</u> 1 Capacity of relevant government sectors to promote inclusion of people who have disability (poverty alleviation, youth, education social services, health) strengthened. 2 People who have disability and their families empowered Increased understanding about CBR among communities in Galnewa sub-district 3 Actions for people with disability among communities and relevant governmental sectors in the target area are improved.</p>	<p>1-a.The number of people involved in IGA increased. 1-b.The number of children attending school increased. 1-c. Number of home and community visits by SSO increased. 1-d. Number registered in elderly people's associations increased 1-e.The number of youth registered in youth clubs increased. 2-a.The number of SHGs set up and participating in CBR meeting increased. 2-b.the number of people who have disability participating in CBO activities, religious and cultural events increased 3-a.The number of activities in which there is social participation of people who have disability increased 3-b The number of interactions between people who have disability and Government officers increased</p>	<p>1-a.Samurdhi records 1-b.School census of NCP Education Dept. 1-c.The visiting records of SSO. 1-d.The membership records of Elderly People's Association. 1-e.The membership records of youth clubs 2-a.CBR meetings attendance records. 2-b.Individual personal records. 3-a.Individual personal records.</p>	<p>Samurdhi and youth programme continue</p>
<p><u>Activities</u> 1-a Clarify own roles within Government sectors in project 1-b Set up networking between Government sectors 1-c Draw a project plan of operation and promote implementation 1-d Train and mobilize Government sectors 2-a Set up Self-help Groups (SHGs) 2-b Network SHGs and CBOs and make plan of operations. 2-c Carry out home and community-level social inclusion and functional independence activities 3-a carry out conscientization and mobilization programmes in communities 3-b Community organizationization for project 3-c Train community workers</p>	<p><u>Inputs</u> : <u>JOCV members</u> Senior JOCV Short term JOCV JOCV to District Samurdhi Programme, JOCV Zonal Education Office, JOCV Provincial Social Service Dept. , JOCV Provincial Youth Service Pogramme</p>	<p><u>Local Counterparts</u> Relevant Provincial Secretaries and Directors Addl. GA Divisional Secretary Samurdhi Manager, Samurdhi Development Officer, Samurdhi Officer Deputy Director of Zonal Education Office Social Service Officer Youth Officer AKASA *Budget and logistics from National CBR Programme and relevant sectors</p>	<p>Relevant governmental officers are understanding the project.</p> <p><u>Pre-conditions</u> Anuradhapura District Secretariat and North-Central Provincial Council do not oppose the project.</p>

## **Overall Goal**

**Females and Males, Elders, Youth, and Children who have disability will have equal rights**

## **Project Purpose**

**Within the National CBR programme  
People who have disability will be  
mainstreamed into divisional  
development in Galnewa sub-district**

## **Outputs**

- 1 Capacity of relevant government sectors to promote inclusion of people who have disability (poverty alleviation, youth, education social services, health) strengthened**
- 2 People who have disability and their families empowered**
- 3 Increased understanding about CBR among communities in Galnewa sub-district**

## **Activities**

**2-a Set up Self-help Groups (SHGs)**

**2-b Network SHGs and CBOs and make plan of operations.**

**2-c Carry out home and community-level social inclusion and functional independence activities**

# Finding out how to develop PCM method for CBR in SL

Senior JOCV placed in Anuradhapura district



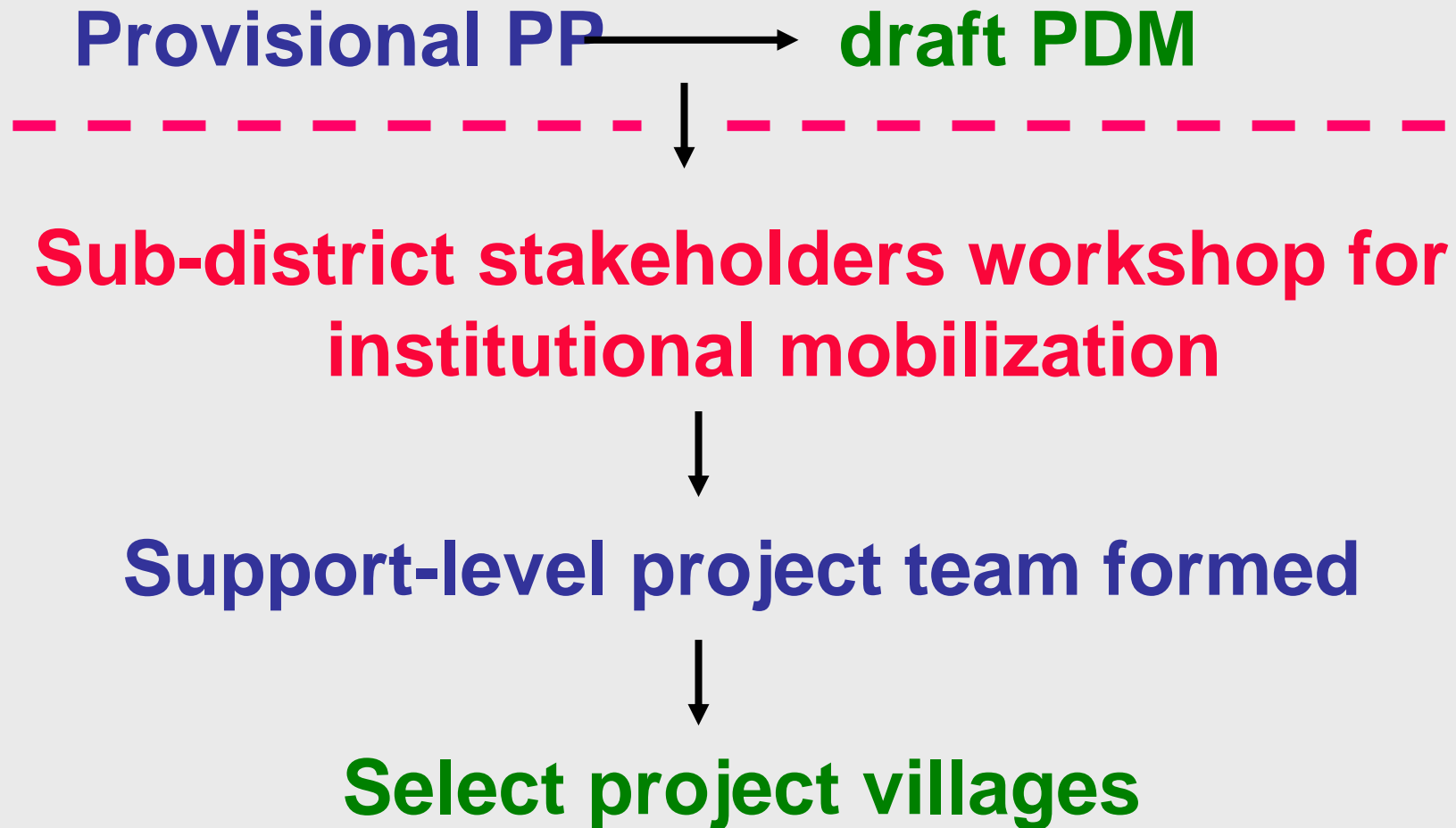
Meets all stakeholders



Project area selected (Galnewa)

Continues informing and collecting and  
analyzing information with stakeholders in  
Galnewa

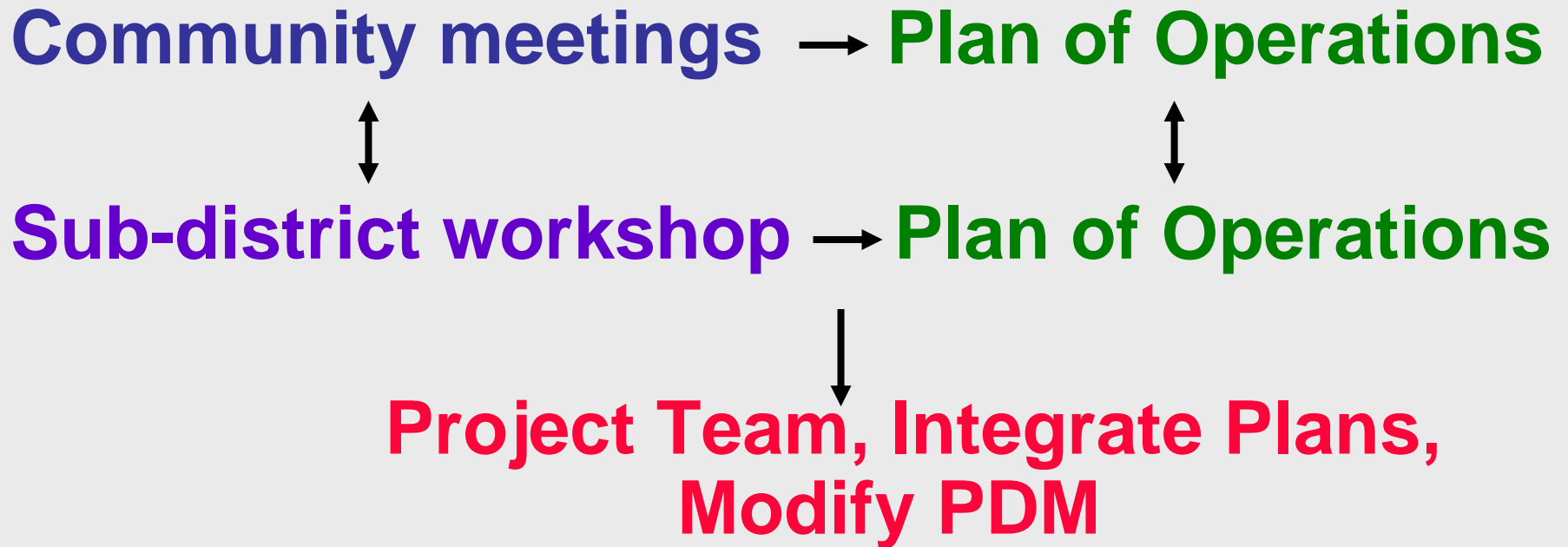
***Finding out how to develop PCM method  
for CBR in SL cont.***





# ***Finding out how to develop PCM method for CBR in SL cont.***

## **Adapted Participatory Planning**



# Kandy CBR project SHG activities



# **AKASA** (DPO) **activities**





**AKASA**  
(DPO)  
**activities**  
*cont.*

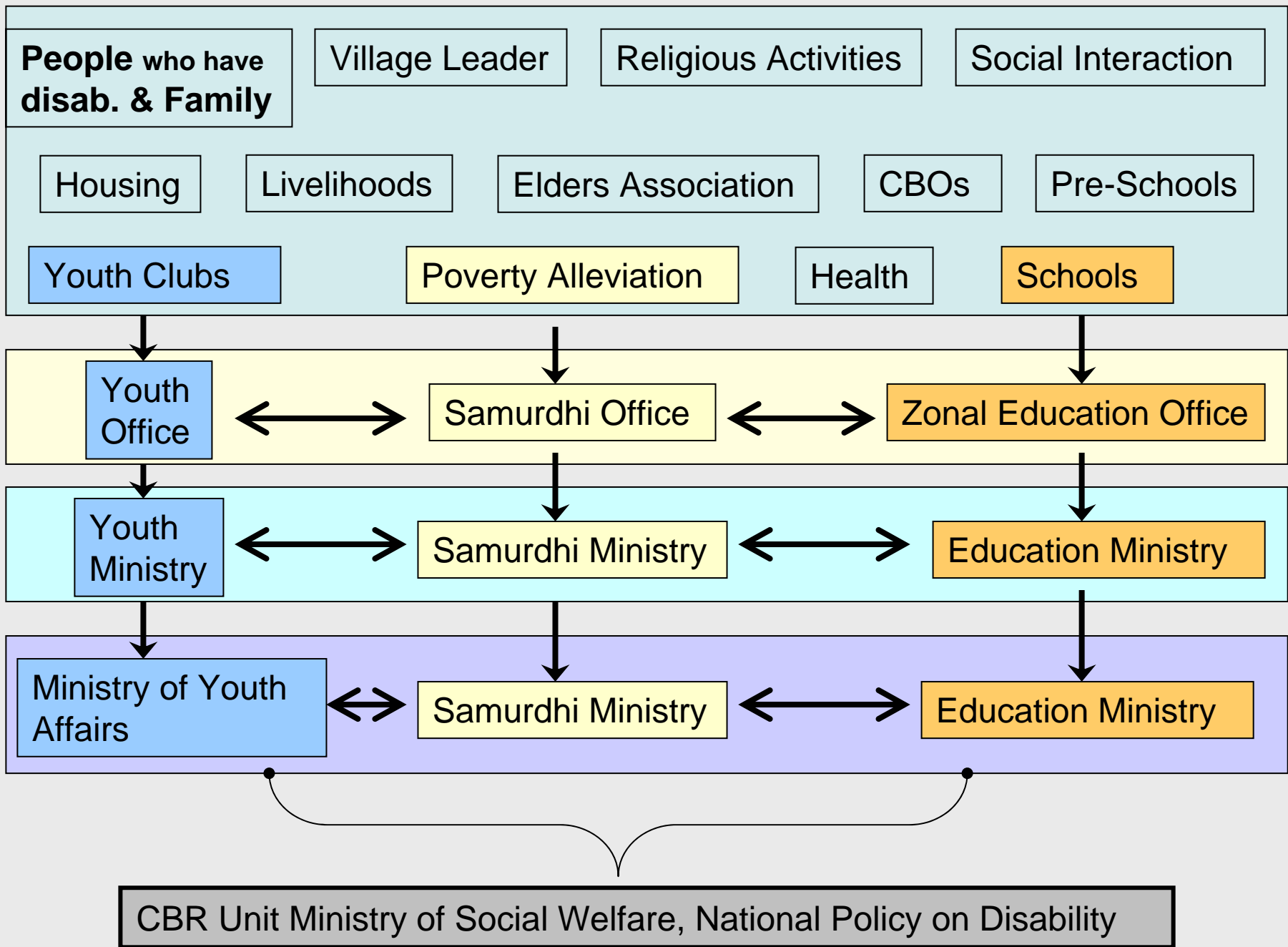


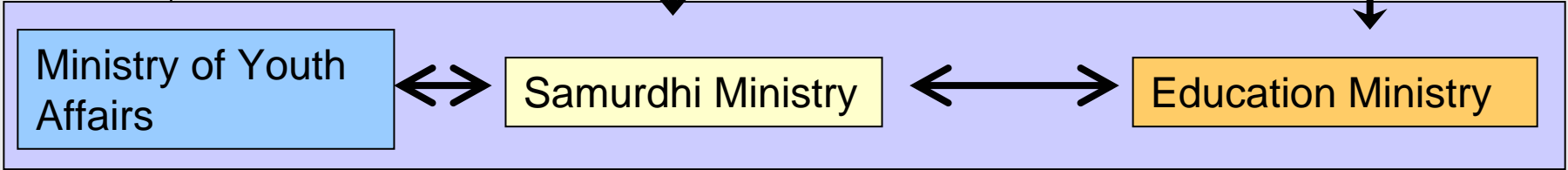
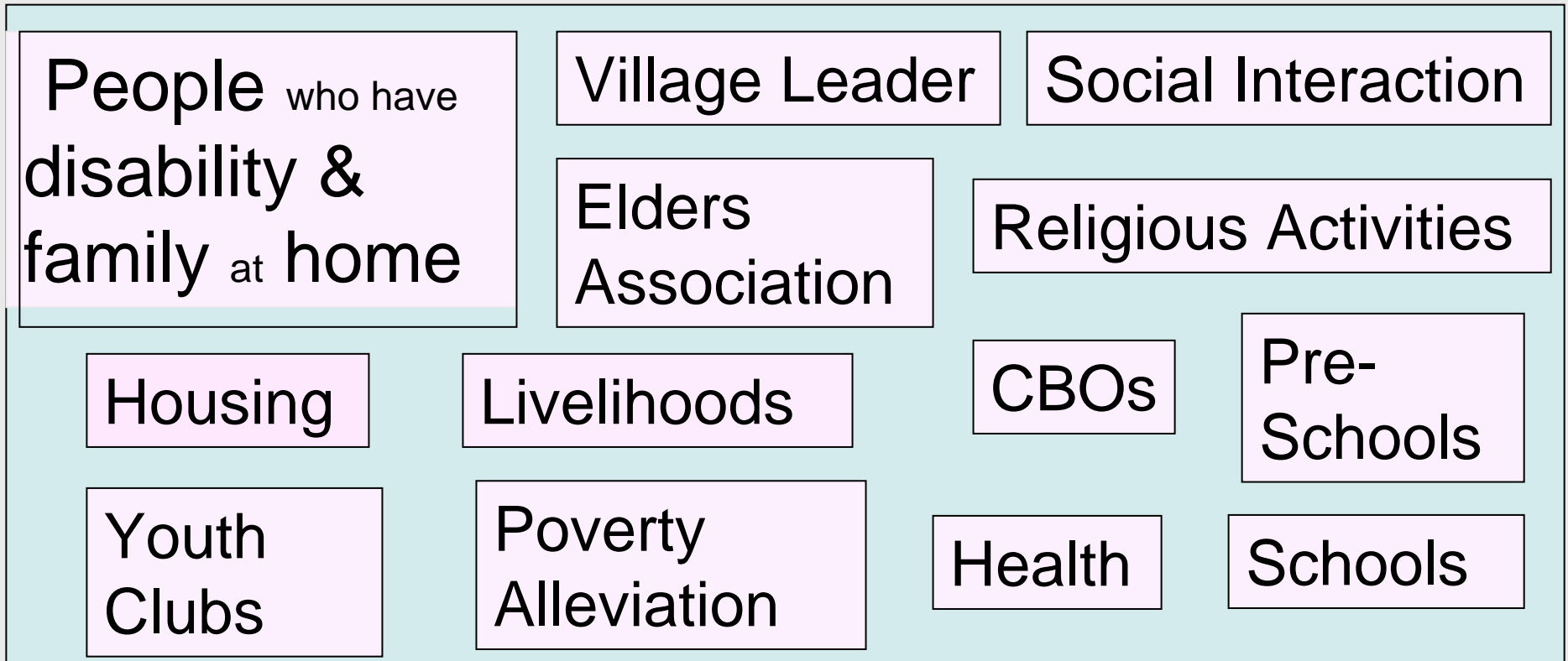
# Management structure

## Monitoring system

**next slides:**    **one, community sectors  
involved in project**

**two, monitoring system  
shown in only 1 sector,  
social welfare sector not  
shown because of lack of  
space!**





CBR Unit Ministry of Social Welfare, National Policy on Disability

**People who have disability & Family**

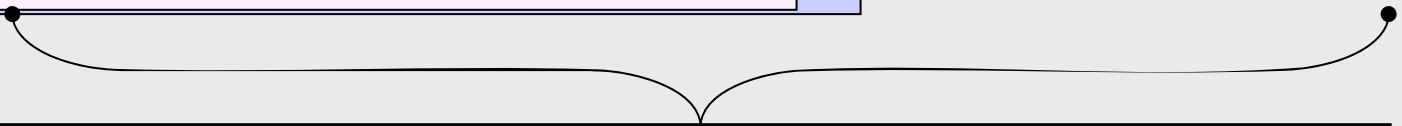
**Youth Clubs**

**Youth Office**

**Provincial Youth Ministry**

**Ministry of Youth Affairs**

**CBR Unit Ministry of Social Welfare,  
National Policy on Disability**





# Monitoring

## Factors to consider

- **two levels; community**  
each support sector
- **inter-relate through Project Stakeholder Team Meetings**
- **develop effective recording and reporting systems**

# Evaluation: issues to consider in 5 criteria



# 1 Efficiency - some issues to consider

- Utilization/participation of manpower inputs in terms of time they spend in project
- Training inputs to utilization and/or participation of manpower inputs
- Influence of manpower inputs on achieving project purpose

# **1     *Efficiency - issues to consider cont.***

- **Relationship between manpower inputs and outputs**
- **Adequacy of budgetary and logistic inputs**
- **Reasons for any negative effects of above**

## **2 Effectiveness – some issues to consider**

- **Quantitative achievement of needs of people who have disability**
- **Qualitative achievement of needs of people who have disability**
- **Community knowledge about needs of people who have disability**

## **2      *Effectiveness –issues to consider cont.***

- **Community participation in decision-making**
- **Networking between Self-Help Groups (SHGs) and CBOs**
- **Networking between Government sectors**

### **3 Impact – some issues to consider**

- **Has project produced any negative effects such as dependency?**
- **To what extent are CBOs open to people who have disability?**
- **Are community and institutions physically accessible?**

## **4 Relevance – some issues to consider**

- To what extent can lessons learned from project be used in National CBR programme?**
- To what extent do lessons learned go towards fulfilling National Policies?**



## **5 Sustainability – some issues to consider**

- Is the sub-district secretariat coordinating different sectors**
- Has the sub-district secretariat included project components in annual plans?**
- Have JOCV counterparts assumed responsibility?**

## **5 Sustainability –issues to consider cont.**

- **Is community participating? How?**
- **Are SHGs active? How?**
- **How effective are networks between stakeholders?**

# Summary/Conclusions

**Sri Lanka's expectations from project**

**(1) Methodology for participatory planning will be determined to enable**

**Community and institutional mobilization**



**Stakeholder involvement from beginning**



**Stakeholder ownership**

## *Summary/Conclusions cont.*

**(2) Project will demonstrate strategies for**

- ensuring stakeholder ownership**
- institutionalizing Disability Rights**

**(3) Project will shift disability work from  
charity and social approaches  
to  
Human Rights Approach**



**Slides from:**

***personal collection***

***Akasa Anuradhapura***

***Fridsro Kandy***

***cyril Siriwardene***

***ITDG Sri Lanka***

**Acknowledgement**

***Naoko Kato***

***Yuko Iwashige***

***Sanae Takahashi***

A woman with dark hair tied back, wearing a pink polo shirt and khaki pants, is seated in a blue wheelchair. She is smiling warmly and looking down at a baby she is holding in her arms. The baby is wearing a white patterned diaper and is looking towards the camera. The background shows an outdoor setting with trees, a thatched roof, and laundry hanging on a line. A text box is overlaid on the left side of the image, and a date stamp is in the bottom right corner.

***“Thank you” to you and  
to the Japanese people  
for your support to us!***

2004 3 16